

LEGEND

- Raingarden
- Concrete Sidewalk
- Grass
- New Inlet
- Parking Kiosk
- Proposed Tree
- Existing Tree
- Detectable Warning Domes
- Curb
- Brick Pavers
- Crosswalk
- Light
- Existing Fire Hydrant
- Bicycle Sharrow
- Storm sewer
- New Trench Drain
- Bus Shelter

MATCH LINE
SEE SHEET 2

Main Street Gettysburg
 PHASE 2B
 BOROUGH LINE TO GETTYSBURG TOUR CENTER
 GETTYSBURG BOROUGH
 ADAMS COUNTY, PENNSYLVANIA
 BALTIMORE MASTER PLAN

C.S. Davidson, Inc.
Excellence in Civil Engineering
 38 NORTH DUKE STREET, YORK, PA • PHONE (717) 846-4855 • FAX (717) 846-5811
 50 WEST MIDDLE STREET, GETTYSBURG, PA • PHONE (717) 337-3021 • FAX (717) 337-0782
 315 W. JAMES STREET, SUITE 102, LANCASTER, PA • PHONE (717) 481-2981 • FAX (717) 481-9600
 WWW.CSDAVIDSON.COM

NO.	DATE	DESCRIPTION

DRAWN BY: CJM
 CHECKED BY:
 SCALE: 1" = 50'
 DATE: 2/6/2017
 DWG. NO. 619110100_Master Plan
 FILE NO. 6191.1.01.00
 SHEET NO. 1 OF 8

K:\619110100\dwg\619110100_Master Plan.dwg, 2/7/2018 4:20:25 PM



LEGEND

- Rain garden
- Concrete Sidewalk
- Grass
- New Inlet
- Parking Kiosk
- Detectable Warning Domes
- Curb
- Brick Pavers
- Crosswalk
- Light
- Proposed Tree
- Existing Tree
- Existing Fire Hydrant
- New Trench Drain
- Bicycle Sharrow
- Storm sewer
- Bus Shelter

Main Street Gettysburg

PHASE 2B

GETTYSBURG TOUR CENTER TO STEINWEHR AVENUE

GETTYSBURG BOROUGH

ADAMS COUNTY, PENNSYLVANIA

BALTIMORE MASTER PLAN



Excellence in Civil Engineering

38 NORTH DUKE STREET, YORK, PA • PHONE (717) 846-4855 • FAX (717) 846-5811
 50 WEST MIDDLE STREET, GETTYSBURG, PA • PHONE (717) 337-3021 • FAX (717) 337-0782
 315 W. JAMES STREET, SUITE 102, LANCASTER, PA • PHONE (717) 481-2981 • FAX (717) 481-9800
 WWW.CSDAVIDSON.COM

NO.	DESCRIPTION	DATE	DRAWN BY	CHECKED BY	SCALE	DATE	DWG. NO.	FILE NO.	SHEET NO.
			CJM		1" = 50'	2/6/2017	619110100_Master Plan	6191.1.01.00	2 OF 8



LEGEND

- Raingarden
- Concrete Sidewalk
- Grass
- New Inlet
- Parking Kiosk
- Detectable Warning Domes
- Curb
- Brick Pavers
- Crosswalk
- Light
- Existing Fire Hydrant
- Proposed Tree
- Existing Tree
- Bicycle Sharrow
- Storm sewer
- New Trench Drain
- Bus Shelter



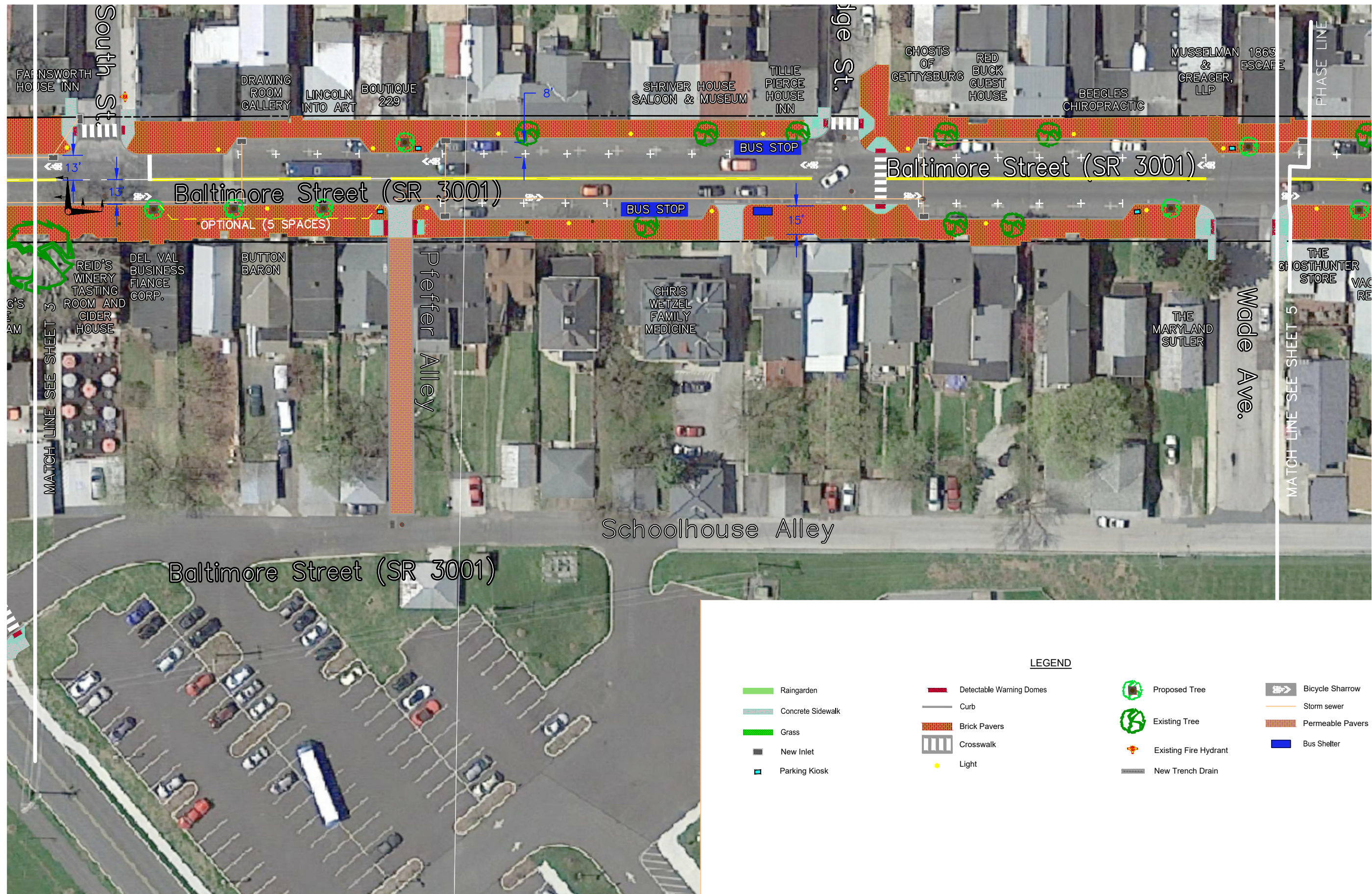
38 NORTH DUKE STREET, YORK, PA • PHONE (717) 846-4855 • FAX (717) 846-5811
 50 WEST MIDDLE STREET, GETTYSBURG, PA • PHONE (717) 337-3021 • FAX (717) 337-0782
 315 W. JAMES STREET, SUITE 102, LANCASTER, PA • PHONE (717) 481-2981 • FAX (717) 481-9600
 WWW.CSDAVIDSON.COM

Main Street Gettysburg

PHASE 1
 STEINWEHR AVENUE TO SOUTH STREET
 GETTYSBURG BOROUGH
 ADAMS COUNTY, PENNSYLVANIA
 BALTIMORE MASTER PLAN

NO.	DATE	DESCRIPTION

DRAWN BY: CJM
 CHECKED BY:
 SCALE: 1" = 50'
 DATE: 2/6/2017
 DWG. NO. 619110100_Master Plan
 FILE NO. 6191.1.01.00
 SHEET NO. 3 OF 8



LEGEND

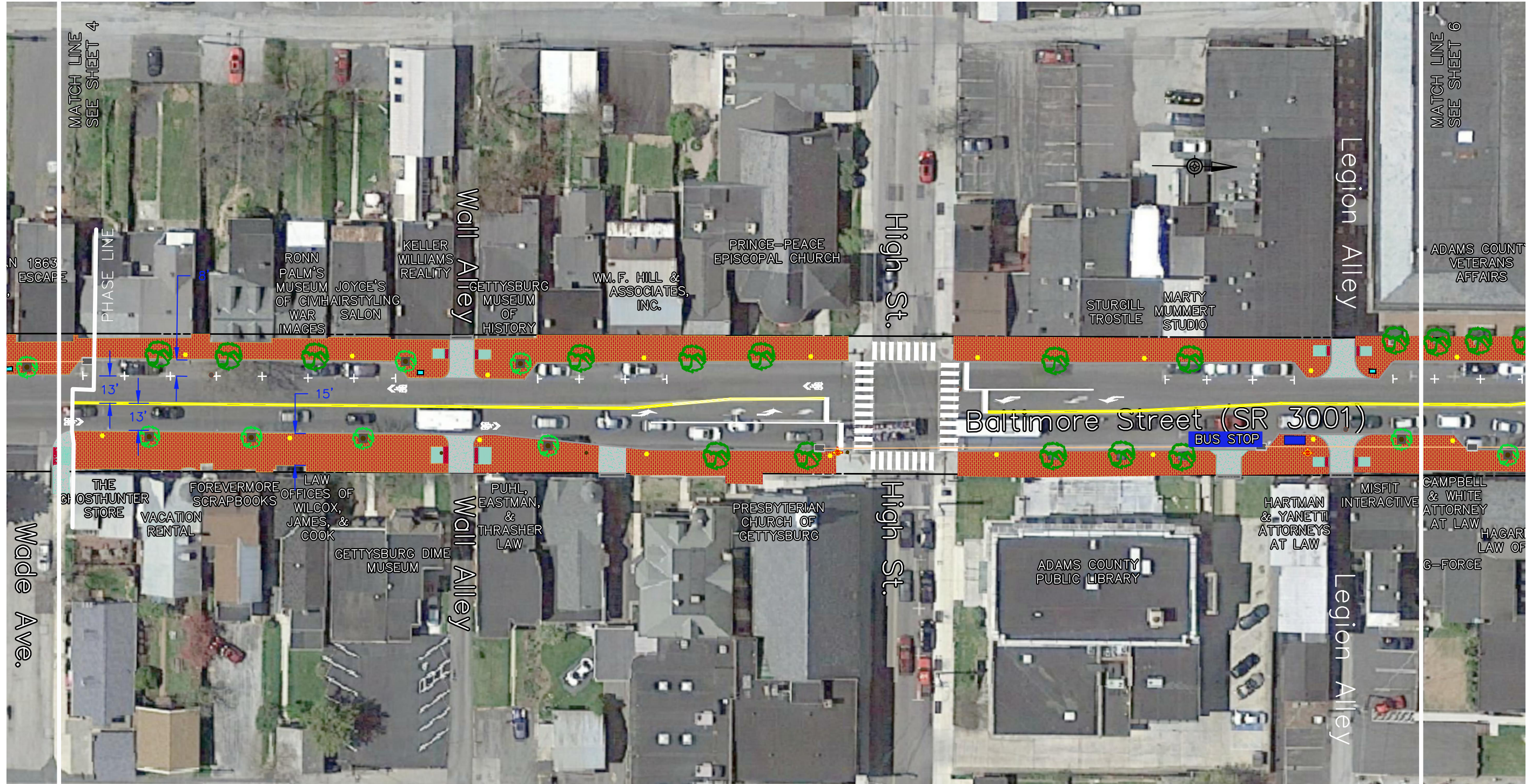
Raingarden	Detectable Warning Domes	Proposed Tree	Bicycle Sharrow
Concrete Sidewalk	Curb	Existing Tree	Storm sewer
Grass	Brick Pavers	Existing Fire Hydrant	Bus Shelter
New Inlet	Crosswalk	New Trench Drain	
Parking Kiosk	Light		

Main Street Gettysburg
 PHASE 1
 SOUTH STREET TO WADE AVENUE
 GETTYSBURG BOROUGH
 ADAMS COUNTY, PENNSYLVANIA
BALTIMORE MASTER PLAN

C.S. Davidson, Inc.
 Excellence in Civil Engineering
 38 NORTH DUKE STREET, YORK, PA • PHONE (717) 846-4855 • FAX (717) 846-5811
 50 WEST MIDDLE STREET, GETTYSBURG, PA • PHONE (717) 337-3021 • FAX (717) 337-0782
 315 W. JAMES STREET, SUITE 102, LANCASTER, PA • PHONE (717) 481-2881 • FAX (717) 481-9800
 WWW.CSDAVIDSON.COM

NO.	DATE	DESCRIPTION

DRAWN BY: CJM
 CHECKED BY:
 SCALE: 1" = 50'
 DATE: 2/6/2017
 DWG. NO. 619110100_Master Plan
 FILE NO. 6191.1.01.00
 SHEET NO. 4 OF 8



LEGEND

Raingarden	Detectable Warning Domes	Proposed Tree	Bicycle Sharrows
Concrete Sidewalk	Curb	Existing Tree	Storm sewer
Grass	Brick Pavers	Existing Fire Hydrant	Bus Shelter
New Inlet	Crosswalk	New Trench Drain	
Parking Kiosk	Light		

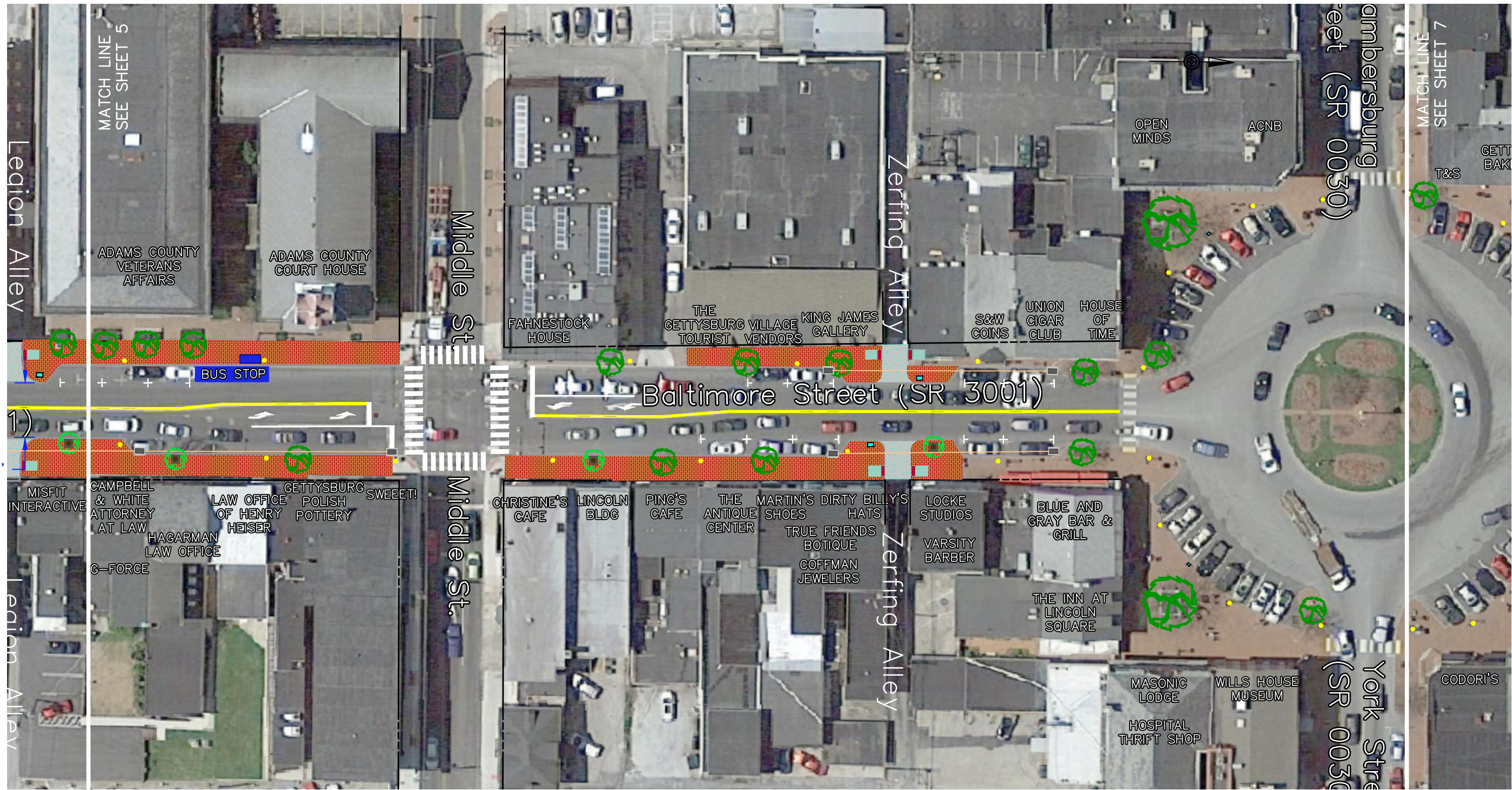
Main Street Gettysburg	
PHASE 2A	
WADE AVENUE TO LEGION ALLEY	
GETTYSBURG BOROUGH	ADAMS COUNTY, PENNSYLVANIA
BALTIMORE MASTER PLAN	

C.S. Davidson, Inc.	
<i>Excellence in Civil Engineering</i>	
38 NORTH DUKE STREET, YORK, PA • PHONE (717) 846-4855 • FAX (717) 846-5811 50 WEST MIDDLE STREET, GETTYSBURG, PA • PHONE (717) 337-3021 • FAX (717) 337-0782 315 W. JAMES STREET, SUITE 102, LANCASTER, PA • PHONE (717) 481-2981 • FAX (717) 481-9600 WWW.CSDAVIDSON.COM	

NO.	DATE	DESCRIPTION

DRAWN BY	CJM
CHECKED BY	
SCALE	1" = 50'
DATE	2/6/2017
DWG. NO.	619110100_Master Plan
FILE NO.	6191.1.01.00
SHEET NO.	5 OF 8

K:\619110100\dwg\619110100_Master Plan.dwg, 2/7/2018 4:20:50 PM



LEGEND

- Raingarden
 - Concrete Sidewalk
 - Grass
 - New Inlet
 - Parking Kiosk
- Detectable Warning Domes
 - Curb
 - Brick Pavers
 - Crosswalk
 - Light
- Proposed Tree
 - Existing Tree
 - Existing Fire Hydrant
 - New Trench Drain
- Bicycle Sharrow
 - Storm sewer
 - Bus Shelter

Main Street Gettysburg
 PHASE 2A
 LEGION ALLEY TO YORK STREET
 GETTYSBURG BOROUGH
 BALTIMORE MASTER PLAN
 ADAMS COUNTY, PENNSYLVANIA

C.S. Davidson, Inc.
Excellence in Civil Engineering
 38 NORTH DUKE STREET, YORK, PA • PHONE (717) 846-4805 • FAX (717) 846-5811
 50 WEST MIDDLE STREET, GETTYSBURG, PA • PHONE (717) 337-3021 • FAX (717) 337-0782
 315 W. JAMES STREET, SUITE 102, LANCASTER, PA • PHONE (717) 481-2981 • FAX (717) 481-9600
 WWW.CSDAVIDSON.COM

NO.	DATE	DESCRIPTION

DRAWN BY: CJM
 CHECKED BY:
 SCALE: 1" = 50'
 DATE: 2/6/2017
 DWG. NO. 619110100_Master Plan
 FILE NO. 6191.1.01.00
 SHEET NO. 6 OF 8

K:\619110100\dwg\619110100_Master Plan.dwg, 2/7/2018 4:20:55 PM



- LEGEND**
- Raingarden
 - Concrete Sidewalk
 - Grass
 - New Inlet
 - Detectable Warning Domes
 - Curb
 - Brick Pavers
 - Crosswalk
 - Proposed Tree
 - Existing Tree
 - Existing Fire Hydrant
 - Parking Kiosk
 - Light
 - New Trench Drain
 - Bicycle Sharrow
 - Storm sewer
 - Bus Shelter

Main Street Gettysburg
 PHASE 2A
 YORK STREET TO GETTYSBURG TRANSIT CENTER
 GETTYSBURG BOROUGH
 ADAMS COUNTY, PENNSYLVANIA
 BALTIMORE MASTER PLAN

C.S. Davidson, Inc.
Excellence in Civil Engineering
 38 NORTH DUKE STREET, YORK, PA • PHONE (717) 846-4855 • FAX (717) 846-5811
 50 WEST MIDDLE STREET, GETTYSBURG, PA • PHONE (717) 337-3021 • FAX (717) 337-0782
 315 W. JAMES STREET, SUITE 102, LANCASTER, PA • PHONE (717) 481-2981 • FAX (717) 481-9600
 WWW.CSDAVIDSON.COM

NO.	DESCRIPTION	DATE

DRAWN BY: CJM
 CHECKED BY:
 SCALE: 1" = 50'
 DATE: 2/6/2017
 DWG. NO. 619110100_Master Plan
 FILE NO. 6191.1.01.00
 SHEET NO. 7 OF 8



LEGEND

- | | | | | |
|-------------------|--------------------------|-----------------------|------------------|-------------|
| Raingarden | Detectable Warning Domes | Proposed Tree | Parking Kiosk | Bus Shelter |
| Concrete Sidewalk | Curb | Existing Tree | Light | |
| Grass | Brick Pavers | Existing Tree | New Trench Drain | |
| New Inlet | Crosswalk | Existing Fire Hydrant | Bicycle Sharrow | |
| | | | Storm sewer | |

Main Street Gettysburg
 PHASE 2A
 GETTYSBURG TRANSIT CENTER TO STEVENS RUN
 GETTYSBURG BOROUGH
 ADAMS COUNTY, PENNSYLVANIA
 BALTIMORE MASTER PLAN

C.S. Davidson, Inc.
Excellence in Civil Engineering
 38 NORTH DUKE STREET, YORK, PA • PHONE (717) 846-4855 • FAX (717) 846-5811
 50 WEST MIDDLE STREET, GETTYSBURG, PA • PHONE (717) 337-3021 • FAX (717) 337-0782
 315 W. JAMES STREET, SUITE 102, LANCASTER, PA • PHONE (717) 481-2981 • FAX (717) 481-9600
 WWW.CSDAVIDSON.COM

NO.	DATE	DESCRIPTION

DRAWN BY: CJM
 CHECKED BY:
 SCALE: 1" = 50'
 DATE: 2/6/2017
 DWG. NO. 619110100_Master Plan
 FILE NO. 6191.1.01.00
 SHEET NO. 8 OF 8